

Annual Report 2024





Index of Contents

THE FOUNDATION

| | |
|-----------------------------|----|
| About us | 04 |
| Mission | 04 |
| How we intervene | 06 |
| Organizational Chart | 07 |
| Fondazione Alta Mane Italia | 08 |

2024 IN REVIEW

| | |
|---|----|
| Brief summary of the main initiatives supported in 2024 | 10 |
|---|----|

DONATIONS SHEETS

| | |
|---------------------|----|
| Art and Social | 14 |
| Art and Health | 18 |
| Art and Development | 20 |

FINANCIAL STATEMENTS AS OF DECEMBER 31ST 2024

| | |
|--|----|
| Breakdown by sector of intervention – Graphs | 30 |
| Map of Alta Mane's Projects | 33 |
| Donations Overview | 34 |
| Legal Information | 36 |



“Culture and the arts are essential components of a comprehensive education leading to the full development of the individual. Therefore, Arts Education is a universal human right, for all learners, including those who are often excluded from education, such as immigrants, cultural minority groups, and people with disabilities”

Road Map for Arts Education, UNESCO, 2006



About us - Mission

Fondation Alta Mane is an international, non-profit foundation, headquartered in Geneva and founded by private individuals in 2005. It is registered in the Commercial Registry of Geneva; it has been recognized as a public-interest entity by the Fiscal Authority of the Geneva Canton and is under the jurisdiction of the Internal Affairs Department of Bern.

The Foundation deploys its financial resources to achieve its institutional goals: support young people living in conditions of extreme social marginalization and poverty, as well as those affected by serious illness or disability by offering them access to artistic experiences.

Art facilitates the recovery of identity, communication and expression skills by engendering confidence in oneself and in others and encouraging intercultural dialogue and social engagement.

Alta Mane operates both in Switzerland and abroad, with particular attention to those countries where the conditions of young people, their rights and their health are most compromised and at risk.

Sharing the conviction, expressed in UNESCO's Road Map for Arts Education (2006), that all youths have the right to grow in dignified conditions and fully develop their potential, the Foundation identified Art, in all its forms (music, dance, theatre, poetry, mime, sculpture, painting and clowning, among others), as its specific, priority area of intervention and built a strategic vision centered on the philanthropic support of youths living in extreme social and health disadvantage.

This choice was also made after observing that culture and the arts, particularly in critical conditions, do not receive sufficient acknowledgement and support by public and private entities despite the recommendations comprised in the 2006 UNESCO's Road Map for Arts Education.

To achieve this goal, Alta Mane has been identifying 4 main priority sectors of intervention, namely: Art and Social, Art and Health, Art and Awareness, and since 2017 Art and Development.

This approach materializes in a variety of initiatives and activities, such as:



Art and Social

Artistic workshops in contexts of social exclusion in favor of extremely marginalized young people or victims of migration

Art and Health

Artistic workshops in therapeutic contexts in favor of youths in extreme psychological and physical distress

Art and Awareness

Awareness-raising initiatives showing the transformative capacity of art through Festivals, plays, tours and specialist reviews and the promotion of its Partners' artistic initiatives and works to increase their visibility and potential future self-sustainability

Art and Development

Research, modelization and dissemination of new arts-based methodologies to intercept and alleviate psychophysical and social distress of those young people living in conditions of extreme social marginalization and poverty, as well as of those on the move, in the view of the possible engagement of the public or private sector

Initiatives (congresses, trainings, festivals and field meetings, among others) to promote the capitalization and replication of practices, toolkits and models capable of introducing a measurable social change and fostering the creation of networks

Development of Monitoring and Evaluation Processes related to arts-based initiatives

Realization of spaces and facilities to host artistic activities dedicated to extremely vulnerable youths, only after a long-standing and valid relationship with the Partner

How we intervene

The Selection Process

The Foundation selects projects either after:



Evaluation of the proposals submitted via the Foundation's website or



direct search and contact with potential partners (scouting) after studying and evaluating projects within the domains and subjects of interest to the Foundation as well as their methods of intervention

projects in co-partnership with AMI.

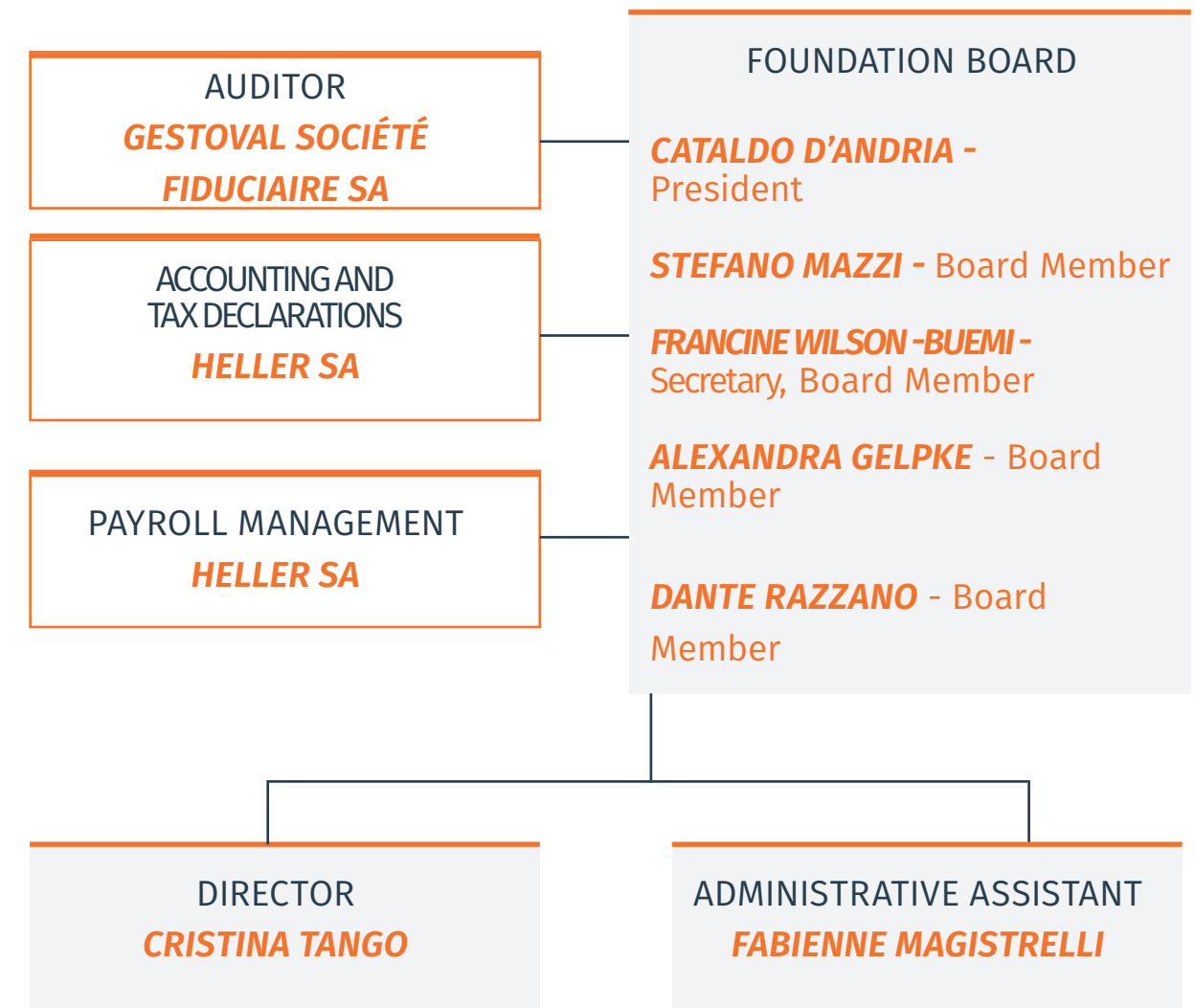
Selection criteria for Partners and Projects

After a preliminary evaluation based on the institutional and financial accountability of the applicant, intended to ensure coherence between the proposal submitted and the Foundation's interests and objectives, potential partners are rigorously selected on the following criteria:

- professionalism of the applicant, its competence, reliability, expertise and previous experience in the field, as well as on the completeness and transparency of the information provided;
- intended objectives, theoretical/practical methodologies designed and adopted, and the appropriate evaluation of the socio-cultural or therapeutic context and of the artistic initiatives put forward;
- adoption of codes of ethics and conduct and operational methodology aimed at guaranteeing full respect for the needs of the beneficiaries and all those operating in the critical context of the project;
- impact evaluation, future self-sustainability and replicability potential of the project.

Additionally, since 2017, in line with the strategic renewal of the Foundation, approved by the Foundation Board and inclined to design new project management perspectives, to adopt new modalities of intervention as well as to prioritize geographical areas of action in order to respond to the migration emergencies affecting many children and youth on the move, the Foundation gives priority consideration to the project proposals localized in Europe.

Organizational Chart



Fondazione Alta Mane Italia (AMI)

Fondation Alta Mane founded Fondazione Alta Mane Italia (AMI) in 2010 as its institutional project, aimed at improving and extending the efficacy of the philanthropic initiatives connected to art education for socially marginalized youths, and art therapy in health care.

AMI's statutory goal is to support projects "aimed at improving the living or health condition of people, individuals or groups, as well as youth, undergoing a profound crisis, extreme social difficulty or psychosocial suffering, by supporting their development and social, physical, recreational, emotional and psychological well-being, particularly through experiences and initiatives tied to Art and its applications in the social and medical field" (article 2.1 of AMI Statutes).

Following recognition from the Prefecture of Rome, AMI began operations in 2011 and quickly extended its reach, connecting with numerous non-profit associations working in this sector, coordinating various exchange projects among its Partners, both in Italy and abroad, and overseeing all activities related to the management, monitoring and follow-up of projects undertaken in co-partnership with the Foundation.

For more information and updates on AMI activities, visit the following website: www.altamaneitalia.org

Brief summary of the main initiatives supported in 2024

In 2024, the Foundation effectively oriented its philanthropic engagement and intervention on bottom-line impact projects, adopting an ecosystemic approach to co-develop, with its partners, learning systems on best practices and experiences arts-based, as well as to foster, amongst them, the development of collaborative arts-based solutions to address different forms of youth distress, in the social and health fields.

Over the past year, the Foundation, providing its partners with expertise and knowledge and sharing with them its medium-long term strategic objectives aimed at generating lasting social impact, encouraged the initiation of multiyear projects within the “Art and Development” sector, aimed, on the one hand, at the development of impact evaluation studies to replicate innovative educational, social and cultural models in different contexts of social distress and migration vulnerability (El Sistema Greece), and to modelize, on the other hand, an evidence-based approach for the replication and scalability of art-therapy interventions in the different emergency migration contexts in Spain and Greece (The Red Pencil Europe).



RED NOSES INTERNATIONAL (Austria)

In parallel, serving as a “connector”, it strengthened the integrated collaboration between two of its long-standing partners (El Sistema Greece and Greek Council for Refugees) intervening in Greece in favor of minors in situation of social vulnerability, with and without a migration background, by supporting the organization of participatory reading workshops on Children’s Rights, subsequently replicated in the community spaces of four organizations specialized in the psychosocial support and inclusion of minors with a migration background and UAMs.

In fine, pursuing its triple objective of triggering lasting social transformations, spreading collective intelligence, and maximizing the impact on beneficiaries, it promoted the creation of NETWORKS amongst its partners and the sharing of their respective operational and intervention methods.

At the same time, it firmly maintained its intervention in migration settings supporting different projects which, in Bosnia and Herzegovina (Musicians Without Borders), in Greece (RED NOSES International) and in Switzerland (Save the Children Switzerland), use art as a means of social integration and as a tool to promote mental health and the psycho-emotional well-being of people, especially minors and UAMs, who find themselves in different contexts of humanitarian crisis and forced migration.

Regarding the co-partnerships, in 2024, the Foundation confirmed the suspension of the partnership agreements managed by Fondazione Alta Mane Italia (AMI), a decision already undertaken in 2019 and reiterated in 2020/2023.

In relation thereto, reminder is given that these are three-way contracts between Fondation Alta Mane, AMI and the beneficiaries (Partners), according to which:

- Alta Mane Italia supports the Partners during the start-up/implementation of their projects throughout varied and complex social or hospital conditions, monitoring and assessing the sustained activities as well as the future conditions of sustainability of the Partner;
- Fondation Alta Mane supports the aforementioned beneficiaries through donations preceded by the usual verifications.

The sector of intervention remains the use of art in situations of extreme social marginalization and hospitalization of young people due to serious pathologies.

OTHERS DONATIONS

In addition to the above mentioned organizations, in 2024, Alta Mane continued to support the Fondation Privée des HUG (Geneva, Switzerland) renewing its grant to the music-therapy project successfully implemented since 2019 at l'Hôpital des Enfants des HUG.

In conclusion and in brief, 7 projects received direct donations from the Foundation, out of which 2 Partners were based in Switzerland (Geneva and Zurich Cantons) and 5 abroad (Austria, Belgium, Greece and The Netherlands).

The graphs at pages 30-32 show the geographical distribution and sector (art and social, art and health, art and development) of the support disbursed by the Foundation in 2024.



ART and SOCIAL

Greek Council for Refugees

Thesaurus IV

Objectives

The “Thesaurus” project, which is part of a non-formal educational program developed since 1996 by the Greek Council for Refugees (GCR), aims to:

- allow minors and youth with a migration background to express their emotions and their experiences in a creative way, within a safe, protected and child-friendly environment;
- improve their self-esteem and increase confidence in themselves and in others;
- strengthen their artistic-creative skills, their relational and socio-communicative skills with their Greek peers.

Beneficiaries

- 494 children and youth, with different migration, cultural and social backgrounds, aged 5-20, participated to the varied creative-artistic and educational activities organized inside the Intercultural Center “PYXIDA”, 3 mixed elementary and secondary schools of Athens, as well as 5 NGOs active in the fields of care and integration of minors with a migration background;
- 14 children (6-11 ages) and 6 parents, with a migration background, participated to 3 cultural visits of the most important museums of Athens and the Region of Attica.

Activities

In 2024, Greek Council for Refugees (GCR), with the support of Alta Mane, has developed the following activities:

- 11 participatory book workshops, on the Rights of the Child, reaching 59 minors and youth, with a migration background, of which 15 UAM (11-20 ages);
- 38 theatre workshops, in collaboration with 3 mixed elementary and secondary schools of Athens, and 5 NGOs active in fields of care and integration of minors with a migration background, reaching 367 minors, including 39 Greek peers (6-18 ages);
- 19 art-education workshops reaching 68 minors, with and without a migration background, (5-17 ages);
- 1 Festival on the Rights of the Child attended by 18 minors and youth (11-20 ages), 6 teachers, 6 staff/collaborators, and 1 parent;
- 3 cultural visits, coupled with several art-education workshops, of the most important museums of Athens and the Region of Attica reaching 14 minors (6-11 ages), with and without a migration background, and 6 parents with a migration background.

Partner

Established as an NGO in 1989, Greek Council for Refugees welcomes and offers, daily, free legal advice and psychosocial support to refugees and asylum-seekers in Greece, to enhance their social integration in the country, with a special emphasis on vulnerable cases, such as unaccompanied minors and victims of trafficking. Recognized as “Special Charity”, GCR has a Consultive Status in the ECOSOC of the UN since 2001 and is an operative partner of the UNHCR. Alta Mane supports GCR since 2021.

ART and SOCIAL



RED NOSES International

Emergency Smile Mission 2024

Objectives

In 2024, RED NOSES International (RNI) has strengthened and deepened its presence on the Island of Lesbos (Greece) by organizing, in collaboration with 9 humanitarian organizations operating in different migration emergency contexts inside and outside the Mavrovouni Closed Controlled Access Center (Moria 2.0), a unique mission of 21 weeks (1st April-27 October 2024), of which 17 weeks supported by Alta Mane.

The project aimed to:

- give children and their families the possibility to bring out their traumas and express their feelings in a playful manner, to help them reconnect to positive feelings and regain reliance and hope;
- transfer the Skills of Healthcare Clowning to the local Staff members and volunteers of humanitarian organizations operating on the field to increase their psychosocial wellbeing and help them reduce secondary traumatic stress disorders;
- integrate, on a regular basis, Healthcare Clowning interventions within the different humanitarian assistance programs of the organizations operating inside the Mavrovouni CCAC and in different community spaces supporting people with a migration background.

Beneficiaries

- 654 minors and youths with a migration background (0-17 ages);
- 296 UAM (13-17 ages);
- 2'738 adults with a migration background;
- 202 humanitarian Aid-workers.

Activities

The mission, which has been conducted on the Island of Lesbos (Greece) in different spaces and care & support centers for different populations with a migration background, has foreseen, with the support of Alta Mane, the following activities:

- 4 Preparatory Weeks on the field during which different teams of Clown-doctors and Head of Mission, also accompanied by a psychotherapist, have been trained for the mission;
- 13 Weeks on the field during which 120 artistic and Healthcare Clowning activities (Circus Smile Workshops; Clown-Shows; Music Parades; Community Building Activities) have been organized reaching 3'688 people with a migration background and 49 humanitarian aid-workers, and 14 Humour Relief Workshops reaching 153 humanitarian aid-workers;
- Final Debriefings during which the clown-doctors had the opportunities to process and reflect on lived experiences, discuss critical issues encountered during the mission, evaluate the interventions and share the Lessons Learnt;
- Developmental Integrated Evaluation Tool: an analysis and impact evaluation process developed by RNI's Research and Learning Department to assess the KPIs achieved during the mission.

Partner

Is a Non-Profit Charity Organization, functioning as the umbrella organization for one of the largest clown doctor groups in the world. With over 20 years of experience, RNI brings together artistic and scientific expertise in the interface between the performing arts, healthcare, and development. RNI is active in 790 medical and social facilities in 10 countries. Alta Mane supports RNI since 2018.



ART and HEALTH

Fondation Privée des Hôpitaux Universitaires de Genève (HUG)

Musicothérapie à l'Hôpital des Enfants des HUG – 2024

Objectives

Successfully integrated since 2019 inside six Paediatric Wards of the Hôpital des Enfants des HUG (Genève), thanks to the unique support of Fondation Alta Mane, the practice of music-therapy significantly contributed to improve the psychophysical well-being of young, hospitalized patients. Moreover, the results of the monitoring and impact evaluation processes, carried out during the years of the project (2019-2024), confirm that music-therapy is considered by the medical and nursing staff of the different wards where the music therapist intervened, as an indispensable complementary practice to the conventional hospital care and medical treatments. More specifically, the project aimed to:

- humanize the hospital experience and allow young patients to build a space of autonomy and freedom, from where to recover their identity as active subjects;
- reactivate their creative abilities and interpersonal ties to reduce the feeling of isolation and loneliness, induced by medical treatments, and mitigate their feeling of powerlessness in the face of illness;
- improve the doctor-patient relationship through a sensory stimulation that, through play, enhance the externalization of feelings, sensations and emotions;
- improve the medical work environment, and reduce the stress of doctors, paramedics and nurses.

Beneficiaries

- 148 children and youths (1 week-19 ages), in long-term care and suffering from serious and/or degenerative pathologies;
- 90 children, with congenital heart diseases or suffering from cardiovascular diseases aged 7 months-16 ages, primarily coming from Africa and participating to the program of the association Mécénat Chirurgie Cardiaque, based in Paris;
- 35 preterm babies, in the Neonatal Care Unit;
- 8 social hospitalizations (8 months-16 ages) and 3 patients (8-14 ages) from the Sentinelle program;
- 2 trainees;
- 219 parents.

Activities

Between February 2024-January 2025, with the support of Alta Mane, the following activities have been implemented:

- 701 individual music-therapy sessions (for a total of 523h and 44 minutes), offered throughout the hospitalization and tailored to the needs, abilities, and socio-cultural specificities of the young patients, reaching 284 children and youths (1 week-19 ages), of which 35 preterm babies and 90 young patients suffering from cardiovascular diseases participating to the Mécénat Chirurgie Cardiaque program, as well as 219 parents in the Neonatal, Medicine B2 and Intensive Care Units. The music-therapy sessions have indirectly reached 60-70% of the nursing staff in the Intensive Care Unit, 10% in the Medicine B1 and B2 Care Units, and 5% in the Neonatal Care Unit;
- 2 training courses in music-therapy (70h) reaching 2 trainees;
- finalization of the linguistic glossary, translated in 13 languages.

Partner

Established in 2007, the Foundation supports the HUG and the Faculté de Médecine of the University of Geneva by financing the development of innovative and ambitious projects: i. in favor of patients (improvement of the quality of health care and assistance); ii. in the field of medical research (translational and fundamental research); iii. humanitarian projects. Alta Mane supports the Fondation Privée des HUG since 2019.

ART and HEALTH



ART and DEVELOPMENT

El Sistema Greece

El Sistema Greece: a model of social inclusion through music

Objectives

Pioneered in Athens in 2016, the music education and training program developed by El Sistema Greece (ESG) has been inspired by Abreu’s reticular pedagogical model and guided by the vision of music as universal language without borders, and as a tool for cohesion and social change. Today, the program is an educational reality of excellence in Greece and a benchmark in the field of music education and social inclusion. In 2024-2026, ESG intends to consolidate the music education and training program, and in parallel, to launch an impact evaluation, framed by the “Theory of Change”, to replicate the “ESG Model” in other contexts of social suffering and migratory vulnerability, as well as to multiply its collective impact.

More specifically, this project aims to:

- enable minors and youths with a migration background to start a post-traumatic resilience process through the music practice, in a protected and safe environment;
- strengthen (empowerment) their artistic-creative skills, improve their social-relational skills, self-esteem and confidence in themselves;
- continue to offer an innovative music education program, to minors and youths with or without a migration background, and build bridges with national and international academic institutions;
- strengthen and extend its several Advocacy & Networking activities, at national and international level.

Expected Beneficiaries throughout the project (2024/2026)

- Approximately 222 students per year (5-26 ages), of which 15 UAM (12-17 ages), and 100 with a migration background (8-26 ages);
- 15 students per year (13-26 ages), of which 40% with a migration background.

Activities

In the three-year period 2024/2026, ESG, with the support of Alta Mane, intends to develop the following activities:

- strengthen the music education and training program inside the núcleos of Kypseli (Athens), the Kaloy’s Conservatory (Korinthos), and the Schisto (Athens) and Korinthos (Korinthos) Refugee Sites, as well as the IOM Emergency Accommodation Center for UAM (Piraeus) in favour of approximately 222 students (5-26 ages) per year;
- annually organize the “ESG Summer Camp” in favour of approximately 80/100 students (8-26 ages) who, during the school year, participate in the different music education activities organized inside the seven núcleos where ESG operates;
- consolidate the Young Leaders Programme in favour of 15 students (13-26 ages) per year;
- launch an impact evaluation, framed by the Theory of Change.

In 2024, with the support of Alta Mane, ESG has developed the following activities: organized 570 music education and training workshops inside the núcleos of Kypseli, the Kaloy’s Conservatory, the Schisto and Korinthos Refugee Sites, as well as the IOM Emergency Accommodation Center for UAM, reaching 522 students (5-26 ages) with or without a migration background, including 272 UAM (13-17 ages). In parallel, reinforced the Young Leaders Program by organizing 10 active citizenship workshops reaching 15 students (12-17 ages) with different cultural, social and linguistic backgrounds. In addition, as an integral part of the music education process, 255 students performed in 17 live concerts, in Greece and abroad, reaching 4’967 people in the audience.

At the same time, launched an impact evaluation, framed by the Theory of Change, to model a pioneering educational model, based on music education, to enhance creativity, improve the social and emotional well-being of children and youth, and promote their social inclusion in the different strata of Greek society.

In parallel, has consolidated and extended its network, by participating, online and in presence, in 15 Networking Events, nationally and internationally, to promote the transformative power of socially engaged arts in generating intentional and positive social change, at a global level.

ART and DEVELOPMENT

Partner

Working in the field since November 2016, ESG is a community music project that provides free music education to children and young people in Greece. Inspired by the philosophy and innovative methodology of El Sistema Venezuela, ESG offers free choir and ensemble instrument classes to children and youth from different backgrounds living in conditions of extreme vulnerability and social disadvantage. Alta Mane supports ESG since 2020.



Musicians Without Borders

Welcome Notes BiH 2024

Objectives

To strengthen the social inclusion of migrants and refugees in Europe through music.

Beneficiaries

- 1’653 people with a migration background, of which 639 minors (0-17 ages), participated to 138 music workshops organized inside the Transit and Reception Centers set up in the Sarajevo Region, Una-Sana and Tuzla Cantons;
- 4 Bosnian musicians were recruited to support the music workshops implemented by 3 Music Bus Teams;
- 7 Bosnian teachers participated to the Follow-up Welcome Notes Training.

Activities

In 2024, Musicians Without Borders (MWB), also with Alta Mane support, has primarily focused its intervention in Bosnia-Herzegovina and, in collaboration with Caritas BiH, developed the following activities:

- strengthened the musical activities conducted by 3 Music Bus Teams which, regularly and continuously, organized 137 music workshops inside the Transit and Reception Centers of Usivak and Blazuj (Sarajevo), Borici and Lipa (Una-Sana Canton), and the Safe Houses Sarajevo and Margina (Tuzla), reaching 1’648 people with a migration background, of which 634 minors (0-17 ages);
- organized, in pilot mode, a Rap Weekend Workshop inside the Safe House Sarajevo, reaching 5 unaccompanied minors (15-17 ages);
- recruited 4 Bosnian musicians, already operating in the country and in migration contexts, to implement the music workshops developed by 3 Music Bus Teams;
- organized a Follow-up Training reaching 7 Bosnian teachers, who previously participated in the MWB Welcome Notes Training in 2023.

Partner

Founded in 1999, Musicians Without Borders (MWB) works worldwide using music as a tool to improve living conditions and reconcile populations torn apart by war. MWB collaborates with musicians belonging to civil society organizations to respond to local needs. Successful cases are used to standardize and promote models, methodologies and training courses adapted to the needs of other regions. Alta Mane supports Musicians Without Borders since 2013.



The Red Pencil (Europe)

Art Therapy Intervention for Resilience in Refugees’ Reception Centers, Andalusia and Greece

Objectives

The overall goal is to increase the resilience of the people with a migration background. More specifically, the project aims to:

- help people with a migration background, through the practice of art therapy, to recover from their traumatic experiences, build resilience, regain self-esteem, and integrate into the community;
- leave lasting impact by training local care providers and enable them to implement basic arts therapy techniques in their own practice;
- offer caregivers, exposed to fatigue and secondary trauma, a new and innovative tool to modulate/reduce stress and increase their Self-Care;
- in the long term, integrate the practice of art therapy in the protection and humanitarian assistance programs implemented in migration contexts in Andalusia and Greece.

Beneficiaries

The project reached 194 people, of which:

- 97 minors with a migration background (4-12 ages), of which 45 UAM (16 ages);
- 3 Spanish minors in situation of social vulnerability (16 ages);
- 61 adults with a migration background (24-34 ages);
- 28 caregivers (Cruz Roja, CEAR, Fundación SAMU);
- 5 art-therapists.

Activities

In 2024, The Red Pencil (Europe), in collaboration with Cruz Roja, CEAR, and Fundación SAMU, with Alta Mane support, developed the following activities:

- organized and ran 117 group art-therapy sessions for 100 minors (4-12 ages), of which 45 UAM and 3 Spanish minors in situation of social vulnerability (16 ages), and 61 adults (24-34 ages), located inside the first and the second line centers ran by: Cruz Roja (Málaga), CEAR (Antequera) and Fundación SAMU (Granada and Sevilla);
- organized an ACBT (Arts-Based Capacity Building Training) reaching 17 caregivers (Fundación SAMU) and an introduction to art-therapy reaching 9 caregivers (CEAR);
- organized 9 interdisciplinary meetings attended by 3 art-therapists and 2 caregivers (Cruz Roja);
- trained 5 art-therapists to replicate, in 2024, art-therapy sessions in Antequera, Granada and Sevilla (Andalusia);
- organized supervision sessions (22h) to assist newly trained art-therapists during their intervention;
- modeled and published an Intervention Protocol to replicate, in 2025, art-therapy sessions in Athens (Greece), in collaboration with El Sistema Greece;
- conducted and published in The Journal of the Arts in Psychotherapy, the research “Forcibly displaced adults’ perspectives on change mechanisms after a resilience building art therapy intervention”.

Partner

Officially established as a foundation of public utility under the Belgian law in 2019, The Red Pencil Europe (RPE) is part of the international organization The Red Pencil Humanitarian Mission. Based on its expertise in art therapy, the mission of RPE is to provide psychological support through arts therapy to children, adolescents and adults who face in Europe difficult or overwhelming life circumstances, to improve their well-being and their mental and emotional health. Alta Mane supports RPE since 2020.



Save the Children Schweiz

Supporting Refugee Children in Switzerland 2023-2025

Phase II

Objectives

Improve the care, psychosocial support and protection of refugee girls and boys in Asylum Shelters in Switzerland and pave the way for the development of minimum standards for childcare and protection in the Asylum Sector.

Expected Beneficiaries throughout the project (2023-2025)

Direct Beneficiaries

- Approximately 75-116 Shelter Staff over 3 years;
- Approximately 30-42 Shelter Directors over 3 years;
- Approximately 540 Child Asylum-seekers and Refugees (0-13 ages) in Federal and Cantonal Asylum Shelters, over 3 years;
- Approximately 300-400 external experts over 3 years.

Indirect Beneficiaries

- Approximately 1'200 Child Asylum-Seekers and Refugees (0-13 ages) in Federal Asylum Shelters, over 3 years;
- Approximately 180 Child Asylum-seekers and Refugees (0-13 ages) in Cantonal Asylum Shelters, over 3 years.

Activities

In 2023-2025, Save the Children Schweiz, with Alta Mane support amongst others, foresees the following main activities:

- to coach Asylum Shelter Directors and Staff to autonomously run Child-Friendly Spaces (CFS) and train them to oversee the CFS and ensure that quality childcare and protection standards are upheld;
- to develop and implement regular arts-based pedagogical activities that are tailored to the needs of the minors in Asylum Shelters by means of the Creative Tool Kit and Activity Box as well as to organize creative workshops that are age adequate, safe, inclusive and trauma sensitive;
- to replicate and scale the Creative Tool Kit and Activity Box and make it available to Federal and Cantonal Asylum Shelters and other organizations in the field of childcare;
- to support Asylum Shelters in developing written concepts for child friendly spaces and activities to anchor knowledge;
- to strengthen the advocacy, enhance networking and share best practices in the field of child protection and child rights in the asylum and migration sector.

In 2024, a total of 31 Asylum Shelters (11 Federal/20 Cantonal) that had already been supported, received continuous support to ensure the quality of the already achieved goals. 27 staff members and 38 directors benefited from needs-oriented coaching and 55 staff members, and 4 directors received standardized refresher trainings. During the same period, a new collaboration with 21 Asylum Shelters (4 Federal/14 Cantonal/3 Municipal) was established. These were supported in the implementation of child-friendly spaces and activities through needs-oriented coaching sessions with 21 staff members, 28 directors and 3 volunteers. A total of 70 staff members, 1 director, 5 volunteers and 6 parents benefited from standardized trainings, including child development and protection, pedagogical principles, and the use of the Creative Toolkit and Activity Box. Simultaneously, 8 Child-Friendly Spaces have been set up and additional 8 Child-Friendly Spaces have been significantly improved; 9 Creative Toolkits and Activity Box were distributed to shelters, as part of the improvement of child-friendly spaces as well as to support child-friendly activities and play afternoons; and 8 creativity workshops were organized reaching 98 children (0-17 ages), 5 Staff Members and 18 parents.

Partner

Has the ambition to assure that every child – especially the most deprived – is protected, provided with a good quality basic education, and receives health services so that they can optimally unfold their potential. Alta Mane supports Save the Children Schweiz since 2016.



Financial statements as of December 31st, 2024



alamy

Image ID: 451172
www.alamy.com

Αναζήτηση με οπτική αναγνώριση

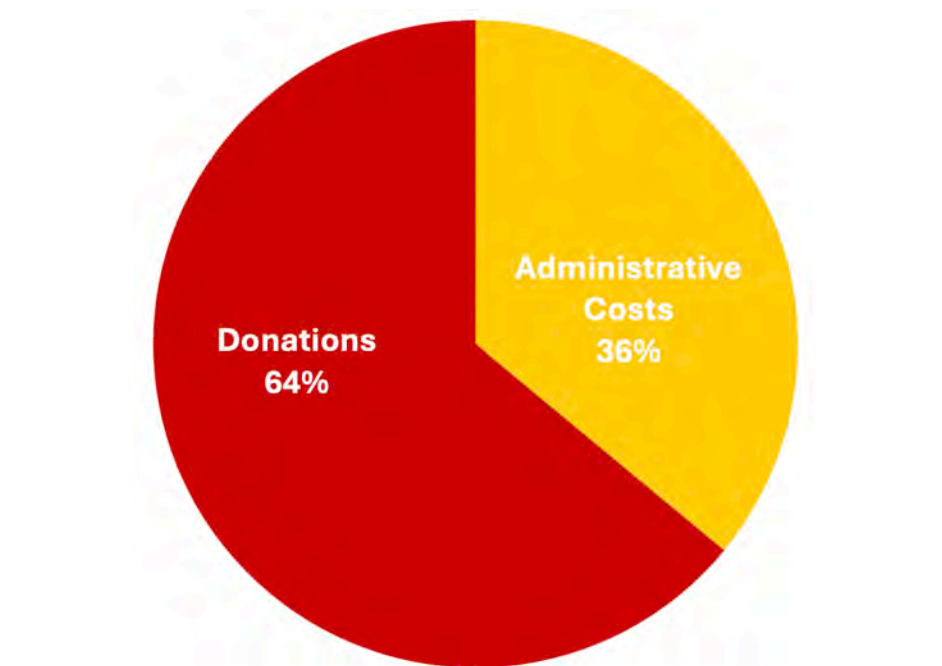
Αποθήκευση

Alamy | Η εικόνα ενδέχεται να υπόκειται σε πνευματικά δικαιώματα

Breakdown by sector of intervention

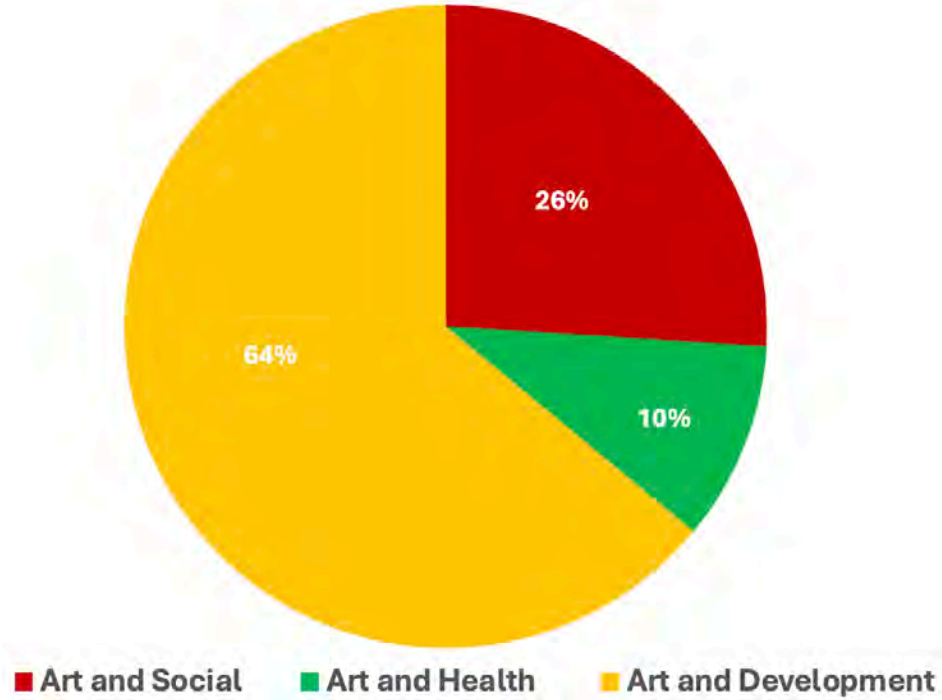
The data used in the following graphs was extracted from the Foundation’s Financial Statements, closed on December 31st, 2024, audited by Gestoal Fiduciaire SA, and approved by the Foundation Board on June 18th, 2025.

In 2024, the administrative costs (Frais de Structure) of the Foundation amounted to 36 % of the total costs, while 64% of the Foundation’s resources were allocated to Donations.



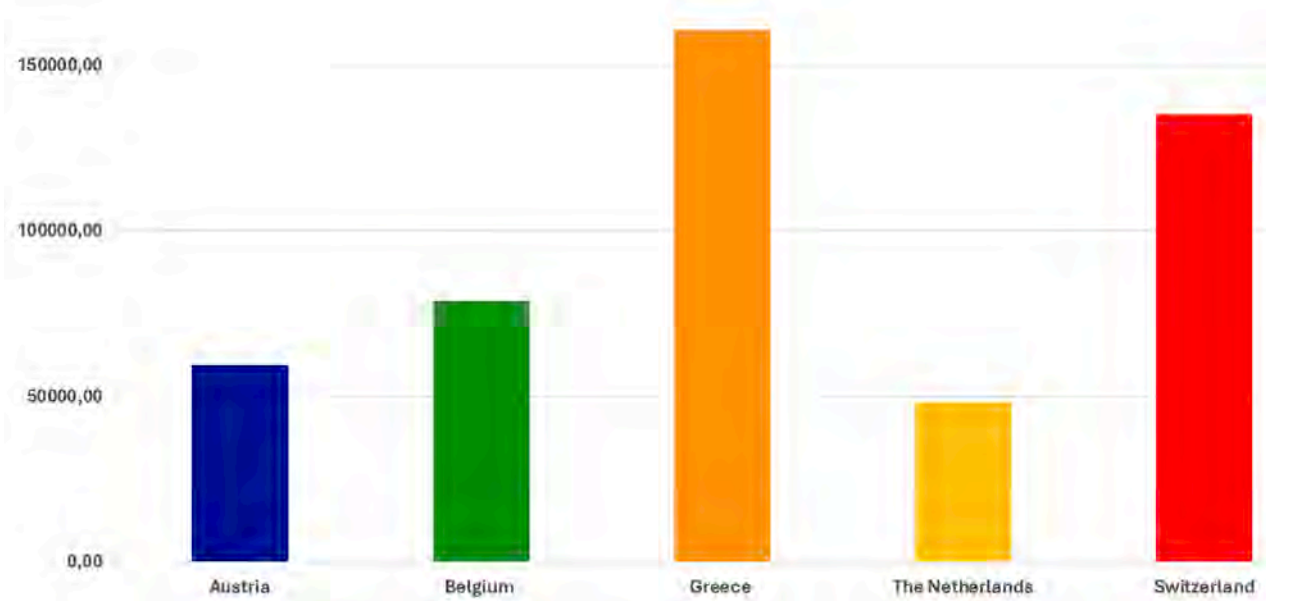
Support by Sector of Intervention

The chart below shows the allocation of the Foundation’s resources by sector of intervention: 64% of its resources were allocated to Art and Development, 26% to Art and Social, and 10% to Art and Health.



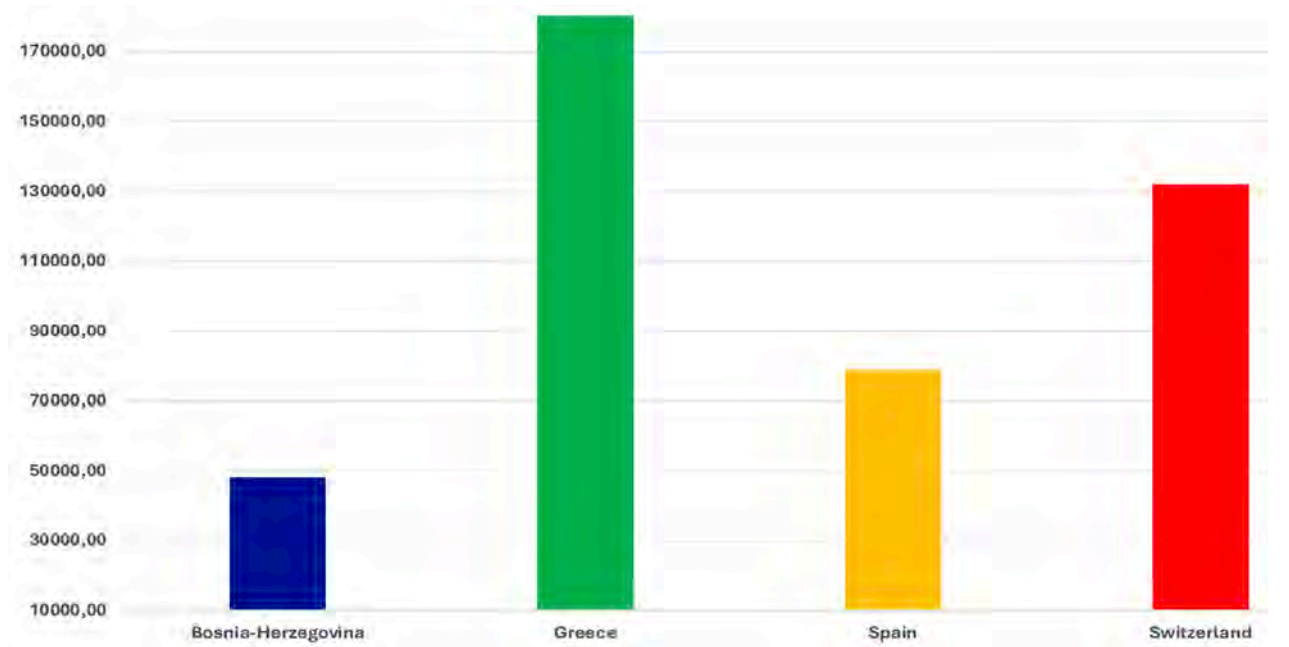
Support by the Country of the Partners

This chart draws the attention to the country of the organisations directly supported by the Foundation in 2024.

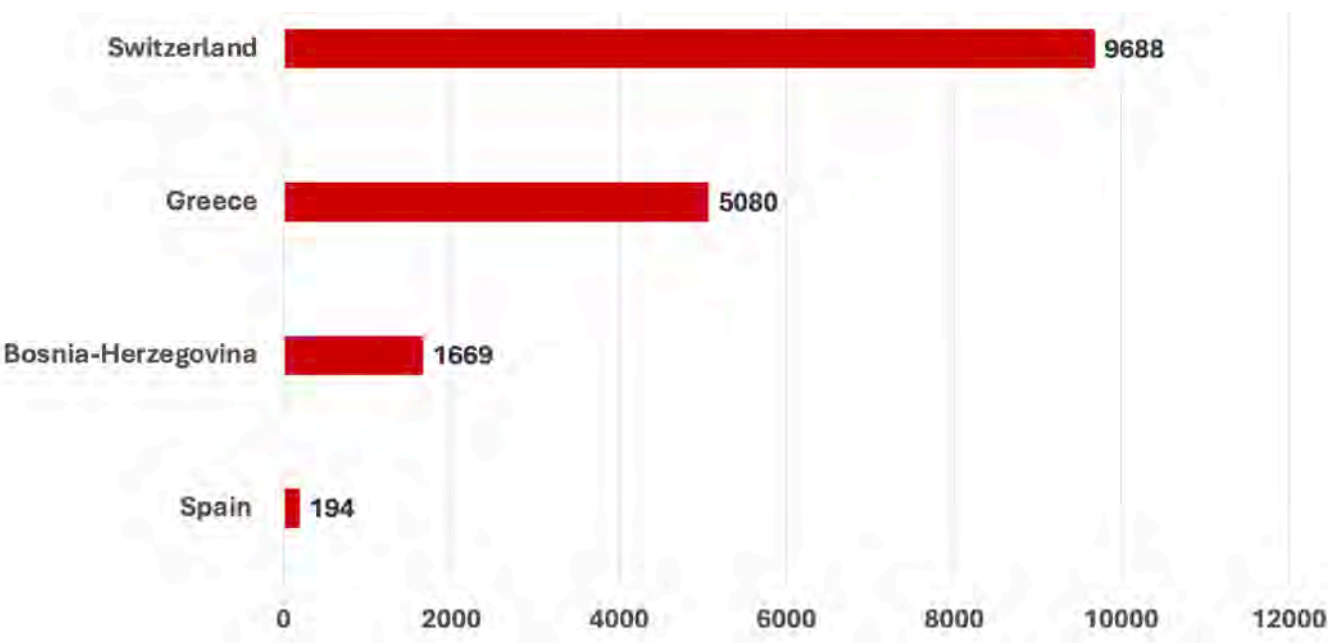


Support by the Country of the Projects

This chart draws the attention to the country where the projects, supported in 2024, have been developed.



Direct Beneficiaries per Project Country, Donations 2024



Map of Alta Mane’s Projects in 2024

The highlighted points in the map show the countries where the projects took place:



7 PROJECTS SUPPORTED BY AMG

Overview of Donations in 2024

16.631 Direct Beneficiaries

Geographical Distribution

- 5** Countries of the Partners
- 4** Project Countries

Art and Social

- 120** Artistic and Healthcare Clowning Interventions (Lesbos, Greece)
- 68** Art Education Workshops (Greece)
- 14** Humour Relief Workshops (Lesbos, Greece)
- 3** Cultural Visits to museums (Greece)
- 1** Healthcare Clowning Mission (Lesbos, Greece)
- 1** Festival on the Rights of the Child (Greece)

Partnerships

- 7** Partners
- 2** in Switzerland
- 5** Abroad

Art and Health

- 701** Effective Music Therapy Sessions (Switzerland)
- 2** Training Courses (Switzerland)
- 1** Linguistic Glossary (Switzerland)

Art and Development

- 570** Music Theory and Practice Workshops (Greece)
- 137** Music Workshops (BiH)
- 117** Art therapy Sessions (Spain)
- 82** Child-Friendly Coaching Sessions (Switzerland)
- 34** Advocacy Actions in the field of asylum and migration (Switzerland)
- 23** Training Courses (BiH, Spain and Switzerland)
- 17** Live Concerts (Greece)
- 16** Child-Friendly Spaces (Switzerland)
- 15** Networking Events (Arts for Social Change, Greece)
- 10** Specialist Events in the asylum and migration sector (Switzerland)
- 9** Creative Tool Kit and Activity Box (Switzerland)
- 9** Interdisciplinary Meetings (Spain)
- 8** Artistic-pedagogic workshops (Switzerland)
- 1** Young Leaders Programme (Greece)
- 1** Summer Camp (Greece)
- 1** Rap Weekend Workshop (BiH)
- 1** Initiation of an Impact Evaluation Study (Greece)
- 1** Article on Mechanisms of Change (Spain)
- 1** Intervention Protocol (Spain)

Legal Information

Members of the Foundation Board:

Cataldo D'Andria – President
 Stefano Mazzi – Board Member
 Francine Wilson-Buemi – Secretary/ Board Member
 Alexandra Gelpke – Board Member
 Dante Razzano – Board Member

The Financial Statements are audited by Gestoval
 Société Fiduciaire SA

The Foundation is registered at the Geneva Trade
 Register – N. 05300/2005

Tax exemption N. 081.351.261 – 11/03/2009

COPYRIGHT: © Fondation Alta Mane

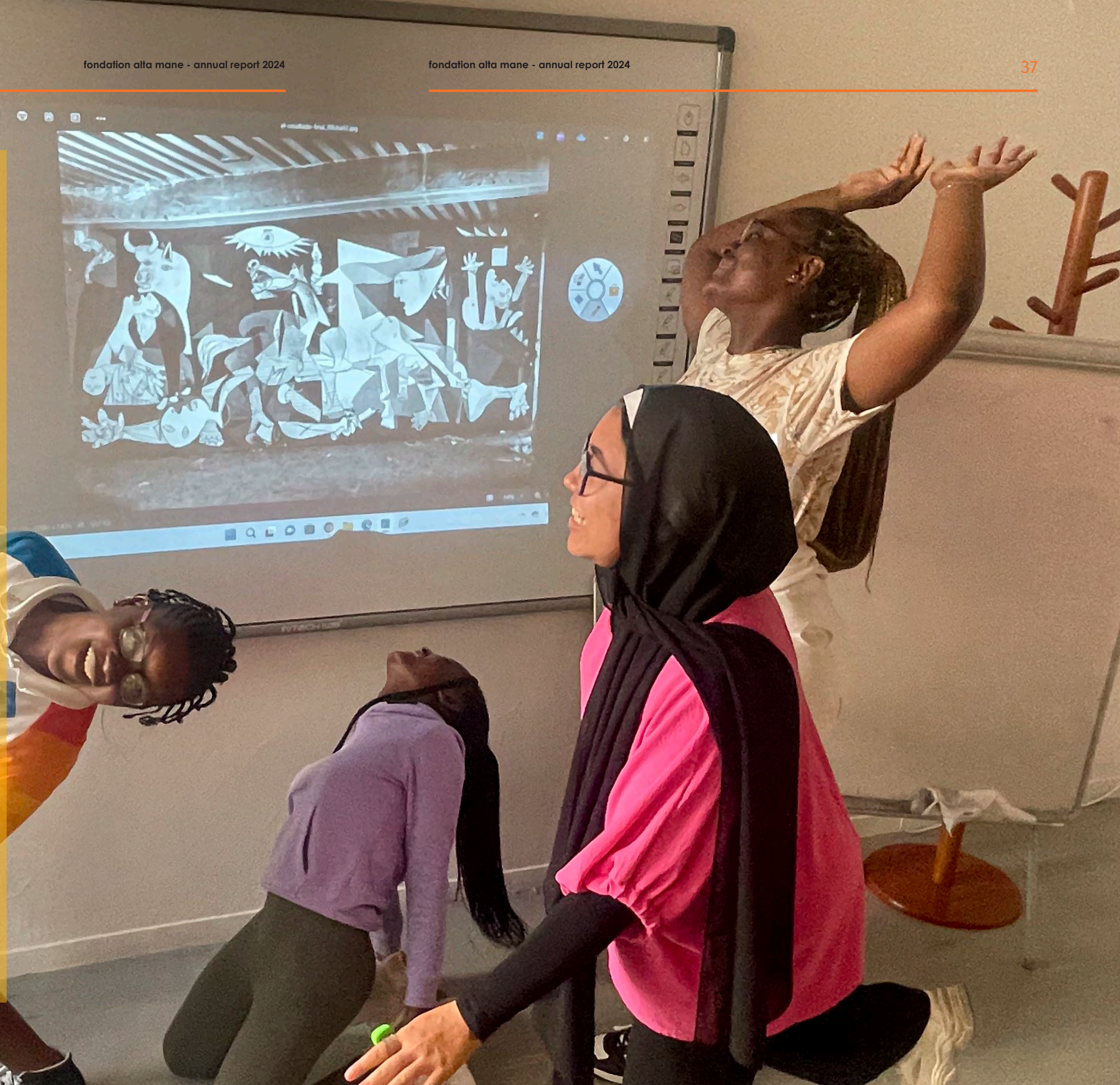
The images, graphics, symbols, drawings, photographs
 and text contained in this report cannot be used,
 reproduced or published in any form and/or by
 any means and/or by any channel, entirely or in
 part, by third parties without express prior written
 authorization from the Foundation.

The material contained in this report, including what
 belonging to the Foundation's Partners, as brand
 names, logos, images, text or photographs, is used in
 this report only with the prior written consent of the
 lawful owners and in pursuit of the statutory aims of
 the Foundation, with the sole objective of providing
 information of a social nature and for exclusively non-
 profit purposes. All other uses are strictly prohibited
 and punishable under national and international law.

The Foundation takes all reasonable care to ensure that
 the material published on this report fully conforms
 with national and international law. Should third-
 party content that is protected by copyright, or other
 rights, have, in good faith and despite preliminary
 checks, been published on this report and for the
 aforementioned aims, the owners are asked to contact
 the Foundation for its eventual removal.

Layout and graphic Paola Raguzzi - Studio Pinguino, Rome

Unless otherwise stated, photography copyright belongs to the respective Partners.



Avenue de Miremont 3
CH 1206 GENEVE Suisse
Tel.: + 41 22 839 89 17
www.altamane.org
secretariat@altamane.org

fondation
alta mane



**alta mane supraque tuos exsurge
dolores in fragilemque animum,
quod potes, usque tene.**

**stand tall and for as long as you
can, rise above your pain and
weaknesses**

Ovidius, Consolatio ad Liviam

